

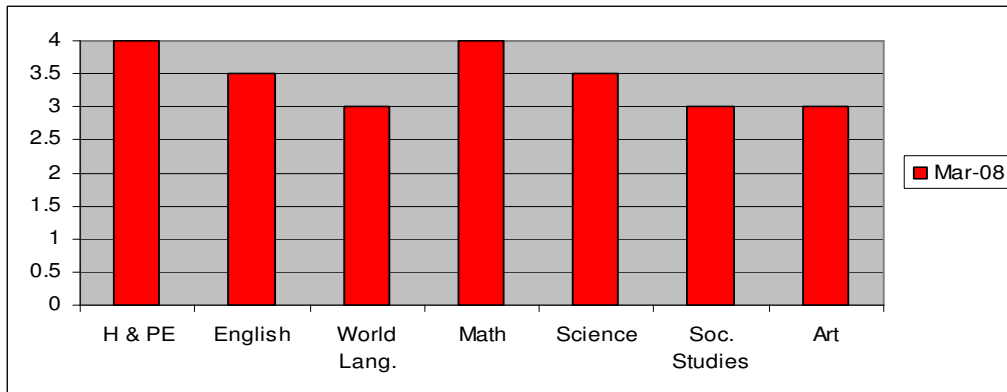
**Albemarle High School
Instructional Leadership and Teamwork Survey
March 2008**

Please take time to assess the current status of your content team for each indicator according to the following scale:

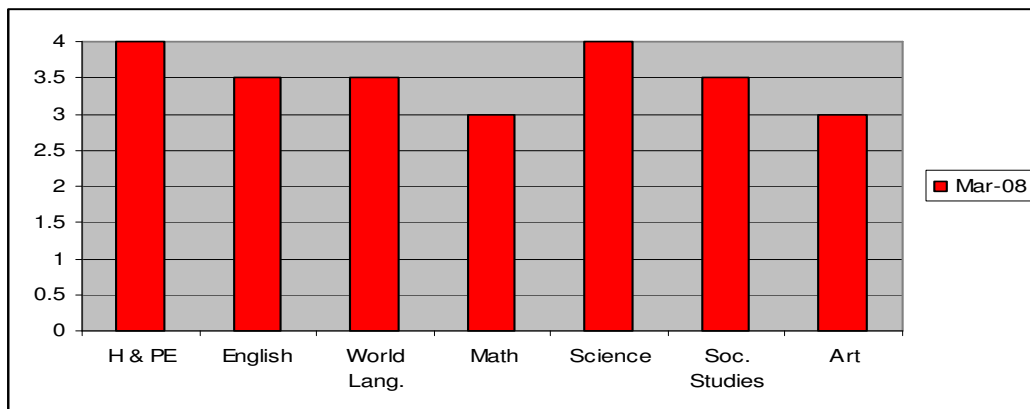
- 4 – This practice is deeply embedded in our culture
- 3 – We have made some changes to move in this direction, but the changes are fragile.
- 2 – We are talking about this, but have taken no significant action to make it a reality.
- 1 – We have not yet begun to address this issue.

Indicators of a Focus on Learning

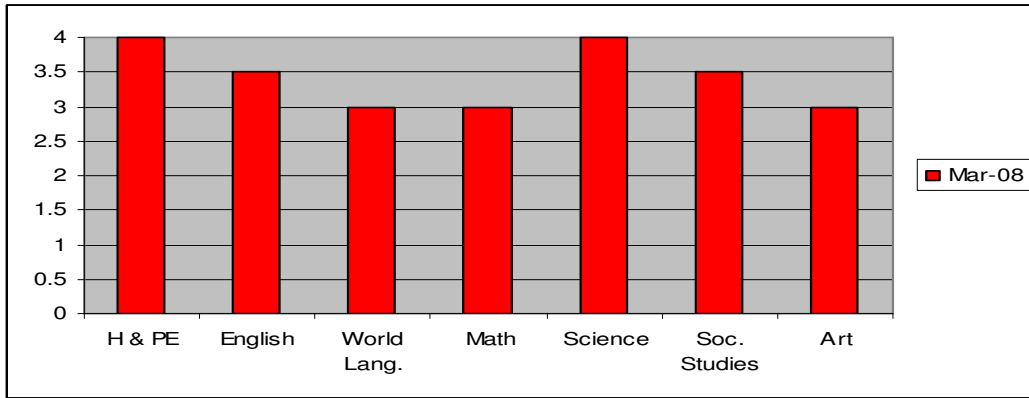
- 1) We work with colleagues on our team to build shared knowledge regarding state standards, district curriculum guides, trends in student achievement, and expectations for the next course or grade level. This collective inquiry has enabled each member of our team to clarify what all students must know and be able to do as a result of every unit of instruction.



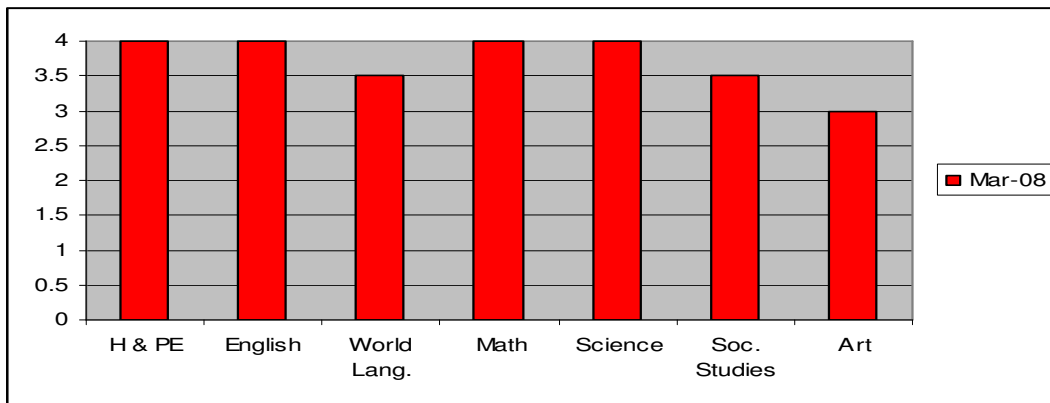
- 2) We work with colleagues on our team to...
A. clarify the criteria by which we will judge the quality of student work



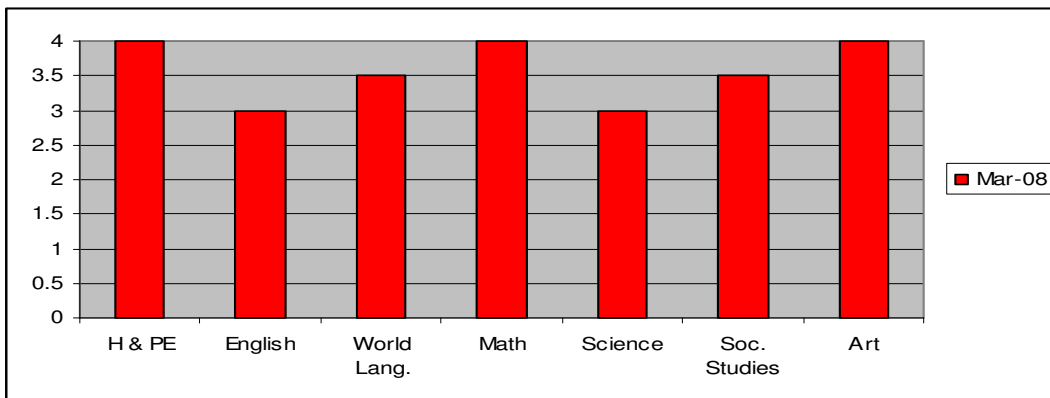
B. practice applying those criteria until we can do so consistently.



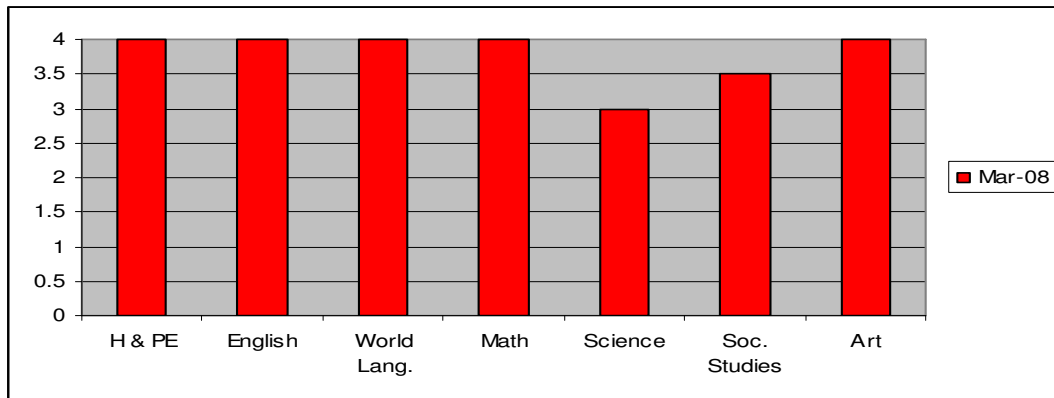
3) We monitor the learning of each student on all essential outcomes on a *timely* basis through a series of frequent, team-developed formative assessments that are aligned with district and state assessments.



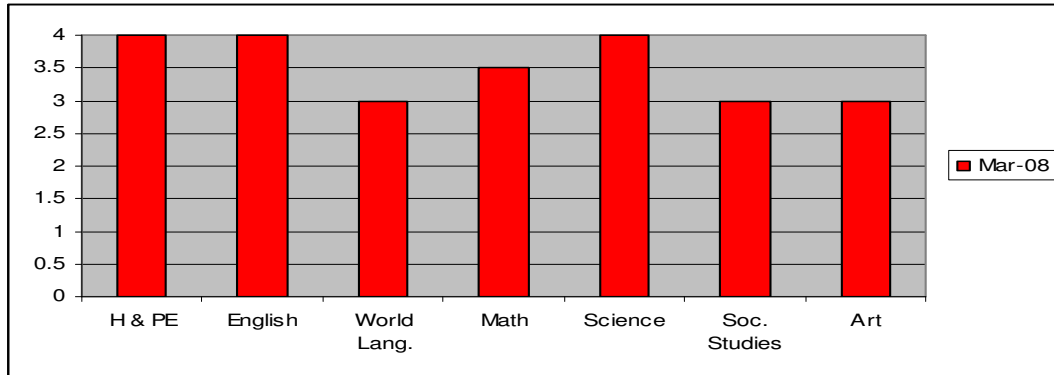
4) We identify the specific standard or target each student must achieve on each of the essential skills being addressed by the formative assessment.



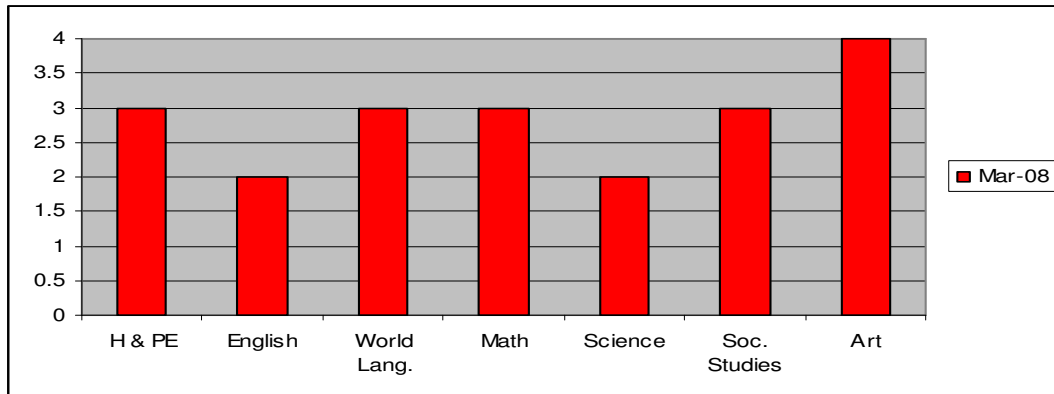
- 5) We provide a system of interventions that guarantees each student will receive additional time and support for learning if he/she experiences initial difficulty.



- 6) Students are required rather than invited to devote the extra time and receive the additional support until they are successful.



- 7) We have developed strategies to extend and enrich the learning of students who have mastered essential skills.



- 8) We continually work together to identify policies and procedures that encourage learning in areas such as homework, grading, discipline, recognition, etc.

